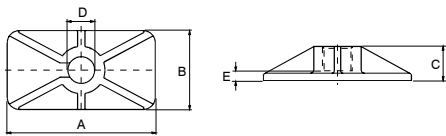
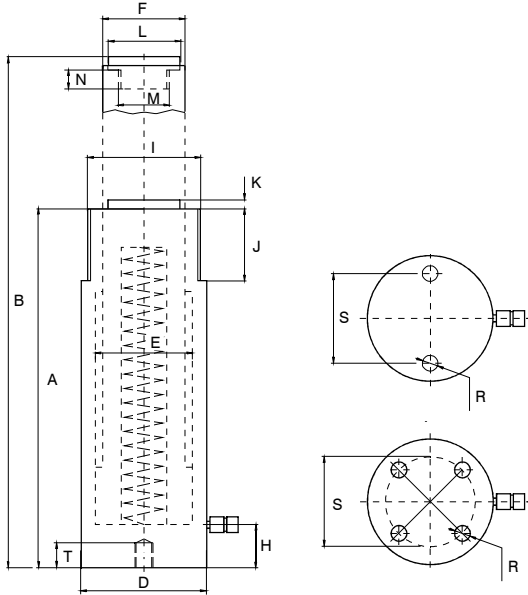
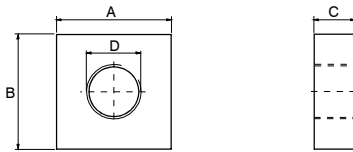


CILINDRI DE UZ GENERAL, SIMPLĂ ACȚIUNE, REVENIRE CU ARC

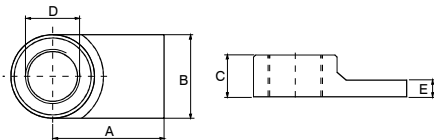
700 bar 5÷220 tf



Ton	cod	A mm	B mm	C mm	D mm	E mm
5	HCH-S 005P 163	163	102	31	40,5	20



Ton	cod	A mm	B mm	C mm	D
5	HCH-S 005B	76	88	25	1 1/2"-16
10	HCH-S 010B	88	114	30	2 1/4"-14
15	HCH-S 015B	114	101	30	2 3/4"-16
23	HCH-S 023B	127	127	45	3 5/16"-12
30	HCH-S 030B	135	135	45	3 7/8"-12



Ton	cod	A mm	B mm	C mm	D	E mm
5	HCH-S 005U	71	40	30	1 1/2"-16	11
10	HCH-S 010U	79	60	37	2 1/4"-14	12
23	HCH-S 023U	105	80	40	3 5/16"-12	20



Forță tf (kN)	Cursă mm	Model	suprafață cm ²	Volum cm ³
5 (48,5)	25	HCH-S 0525	7,06	18
	76	HCH-S 0576	7,06	54
	127	HCH-S 05127	7,06	90
	180	HCH-S 05180	7,06	128
	232	HCH-S 05232	7,06	164
10 (109,2)	25	HCH-S 1025	15,9	40
	54	HCH-S 1054	15,9	86
	105	HCH-S 10105	15,9	167
	155	HCH-S 10155	15,9	247
	205	HCH-S 10205	15,9	326
	257	HCH-S 10257	15,9	409
	307	HCH-S 10307	15,9	489
15 (163)	355	HCH-S 10355	15,9	565
	25	HCH-S 1525	23,75	60
	54	HCH-S 1554	23,75	129
	105	HCH-S 15105	23,75	250
	155	HCH-S 15155	23,75	369
	205	HCH-S 15205	23,75	487
	257	HCH-S 15257	23,75	611
23 (227,8)	307	HCH-S 15307	23,75	730
	355	HCH-S 15355	23,75	844
	25	HCH-S 2325	33,17	83
	51	HCH-S 2351	33,17	170
	102	HCH-S 23102	33,17	339
	159	HCH-S 23159	33,17	528
	210	HCH-S 23210	33,17	697
30 (303,2)	261	HCH-S 23261	33,17	866
	310	HCH-S 23310	33,17	1029
	362	HCH-S 23362	33,17	1201
	60	HCH-S 3060	44,16	265
	150	HCH-S 30150	44,16	663
	210	HCH-S 30210	44,16	928
	50 (486,5)	60	HCH-S 5060	70,85
102		HCH-S 50102	70,85	723
160		HCH-S 50160	70,85	1134
75 (712,9)	339	HCH-S 50339	70,85	2402
	160	HCH-S 75160	103,8	1661
	330	HCH-S 75330	103,8	3426
100 (911)	60	HCH-S 10060	132,7	797
	150	HCH-S 100150	132,7	1991
	260	HCH-S 100260	132,7	3451
140 (1380)	60	HCH-S 14060	201	1206
	150	HCH-S 140150	201	3015
	260	HCH-S 140260	201	5226
220 (2156)	150	HCH-S 220150	314	4710